

cardax

Integrated Security Solutions



cameras, in order to make the processes in the company transparent and comprehensible. Possible thefts can be uncovered and prosecuted consistently.

An additional visual identity control of card holders by a comparison of the camera live image of the accessing person with an image saved in the system is possible with Cardax FT Challenge. This way you avoid unauthorized persons accessing secured areas with a foreign card.



Free area surveillance

The Cardax FT System can be expanded with the PowerFence™ High Security fence system for the securing of outside areas, like open air storage areas or parking areas.

www.averde-security.com



AVERDE

SECURITY MANAGEMENT SYSTEMS

AVERDE GmbH & Co. KG

Albert - Einstein - Straße 9

86899 Landsberg am Lech

Germany - Deutschland

Tel: +49 (0) 81 91 98 59 00 55

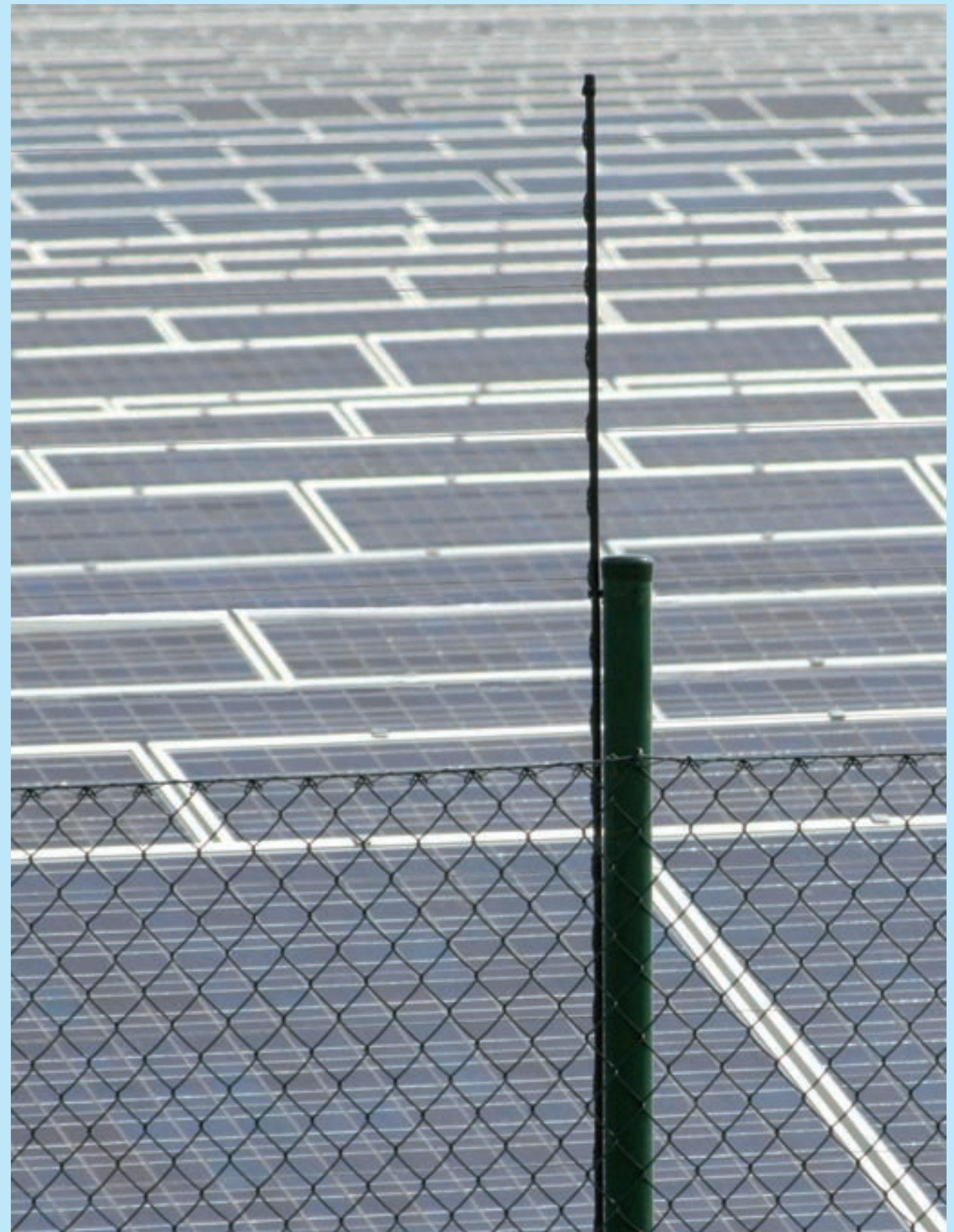
Fax: +49 (0) 81 91 98 59 00 33

www.averde-security.com

info@averde-security.com

SECURITY MANAGEMENT SYSTEMS

AVERDE



www.averde-security.com



PowerFence™ is a high security fence system for the prevention and defense of theft, sabotage, and material damage. Our security systems are designed for all types of free area securing (e.g. solar units, storage areas, company premises, etc.), roof and wall solutions (Walltop-Kit) for building security, and the securing of roof solar areas. The system can be mounted onto an existing fence unit, or be directly adapted to situations with the Walltop-Kit.

The **PowerFence™** system works in two ways: On the one hand it registers if an unauthorized person tries to enter the secured area (e.g. touching or cutting of the wires). Depending on the equipment, the system localizes in which fence area the access is taking place, and independently warns in an optional manner (via PC, mobile, security service, etc.). Contact by animals and weather like snow or wind are recognized by the system. This prevents unnecessary false alarms. On the other hand the system acts as a deterrent towards intruders by sending out an electrical current impulse every second, making it impossible to pass the fence. The voltage is fully harmless to humans, and comparable to a electric shock you would get from a pasture fence. The voltage can be controlled separately for the fence areas and times of day. Day operation is therefore also possible with 12 V low voltage. This way all alarm and warning functions are preserved without the sending of a voltage impulse.

PowerFence™ is individually configurable and integrates all applications relevant to your safety. This way you receive your custom-tailored safety solution through the selection of the matching parameters to moderate prices and low energy consumption comparable to a 40 W lightbulb.

Cardax FT – your access to control

With Cardax FT, all required safety demands of a company can be integrated flexibly and expanded at will. Alarm management, access controls and authorizations, video surveillance (live and remote), and open area securing (PowerFence) are standard functions.

If need be, the system also integrates biometrics, control of elevators, air conditioning and lighting units, automatic vehicle recognition and much more over flexible interfaces. This way you reliably protect your company and employees from break ins, theft, data theft, and vandalism.

The system is Windows 2000/XP Pro compatible, offers SSL - coding, supports SQL-database, TCP/IP-network connection, and can be easily connected to existing or new LAN or WAN networks.

Alarm

Cardax FT independently reports intruders to the Monitoring Center, which immediately informs the security service to retain security immediately. Other situations can also be handled as alarms. For example an alarm signal can be triggered if the temperature in a building area exceeds or drops below a certain temperature. This way versatile events that are important for your company can be supervised.

Access control

With the Cardax FT-system, you have full control about the whereabouts of personnel, visitors, or vehicles at any time. For example, employees that work after business hours are protected against intruders from the outside through special access authorizations. The protection is also directed towards the inside, as each individual access card can be coded with different access authorizations. This way sensitive company areas can be made accessible only to selected persons. The integration of new employees with corresponding access rights is also easy. Beyond that, Cardax FT possesses an elaborate reporting system, and enables the simple evaluation of all movement on the company premises in paper as well as video form. The risk that keys of master key systems are lost or stolen is eliminated thanks to Cardax FT. With the access cards that can be re-programmed anytime through the touch of a key on a computer, ongoing security is guaranteed. This way you will not have to exchange expensive key systems ever again.

Visualizing systems

With the Cardax FT DVR Interface you can integrate various digital video recorders and Voice-over-IP-systems. Every security event can trigger a video recording process. The recording camera can then immediately send the recorded images from the time prior to, during, and after the event to the Cardax FT Monitoring Center for evaluation. This way you can connect all desired events to video

